

# RW185

## Handhold Portable Wireless 2D Barcode Scanner



### Product Description

**RW185** is a compact, portable screen-equipped scanner designed by NETUM, featuring a miniaturized body for easy portability.

**Dual-mode usage design:** Supports both handheld grip and ring-worn modes, allowing flexible switching based on usage scenarios.

**Visual display design:** Features an independent screen that displays real-time scanning results, battery level, connection status, and other core information.

**Orange-Black Industrial Aesthetic:** Bold black-and-orange color scheme blends modern style with professional appeal for high visual recognition.

**Physical Button Layout:** Features a large primary scan button paired with a functional secondary button, providing clear tactile feedback to prevent accidental presses.

### Product Features

**Rapid and Accurate Recognition:** Supports high-performance 1D/2D barcode scanning, delivering excellent performance even with low-contrast, damaged, or distorted printed barcodes.

**Replaceable Battery:** Allows users to easily remove and replace the battery, enabling quick restoration of battery life without relying on charging.

**Flexible Multi-Scenario Operation:** Supports wireless connectivity via Bluetooth, enabling seamless integration with smartphones, tablets, PDAs, and other smart devices.

**Universal Adaptability:** Handheld mode facilitates rapid single-point scanning, while ring mode supports continuous operation, covering diverse scenarios including retail, warehousing, and logistics.

### Application Scenarios

#### 1. Logistic and Express pick up and delivery

Mini portable + ring wearable design, Allows couriers to wear the device on their finger, completely freeing up both hands for simultaneous package handling and smartphone/terminal operation, significantly boosting pickup and delivery efficiency. The replaceable battery design eliminates the need to locate charging stations during field operations—simply swap in a spare battery for continuous operation, ensuring all-day pickup and delivery needs are met. Ergonomic comfort and durable materials reduce hand fatigue from frequent scanning, accommodating couriers' extended outdoor work. Multiple transmission modes (including Bluetooth) enable

rapid connection to smartphones or delivery systems, ensuring real-time logistics data upload and timely information synchronization.

## 2. Warehouse inventory count

Mini Size + portable shape, Facilitates maneuvering between densely packed shelving units, don't need to take heavy device, Enhanced inventory flexibility. The ring-worn design enables one-handed operation, allowing staff to handle goods and verify information with the other hand—eliminating the need to repeatedly pick up and put down the device. Replaceable batteries + extended battery life support prolonged continuous inventory tasks, preventing interruptions from mid-task charging. Multiple transmission modes (2.4G / Bluetooth) enable real-time data synchronization with warehouse management systems, ensuring accurate inventory updates.

## 3. Retail store checkout

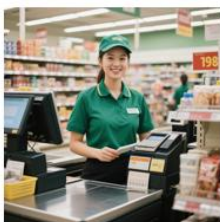
Compact and lightweight design allows cashiers to handhold for rapid product barcode scanning or wear as a ring to free hands while simultaneously operating the POS system and organizing merchandise. The screen-equipped visual display shows real-time scan results and total amounts, eliminating reliance on the register screen and boosting checkout efficiency. Multiple transmission modes (Bluetooth) enable swift connection to the POS system, ensuring stable data transfer and reducing checkout wait times. Ergonomic design reduces hand fatigue during prolonged scanning in high-frequency scenarios.

## 4. Manufacturing production line

Portable + ring-style wearable design allows workers to operate with one hand on the production line while using the other for product handling and process operations, maintaining production flow. Constructed from durable, wear-resistant hard plastic, it withstands workshop conditions including oil, dust, and other complex environments. Its impact-resistant and scratch-proof design ensures long-term equipment reliability. The replaceable battery design prevents production line interruptions for charging, guaranteeing continuous process tracking and data logging. Multiple transmission modes enable stable connectivity to production management systems, synchronizing real-time production data to enhance digital management efficiency on the production line.

## 5. Medical Drug Management

Hard plastic wear-resistant + antimicrobial material effectively inhibits bacterial growth, meeting medical hygiene and safety requirements while reducing cross-infection risks. Portable + finger ring design frees healthcare workers' hands, enabling simultaneous medication verification and patient data entry to boost efficiency. Replaceable battery + extended runtime ensures uninterrupted operation during medical procedures (medication inventory, patient identification). Multi-transmission modes (Bluetooth/wired) enable stable integration with hospital information systems, synchronizing medication inventory and patient data in real time to ensure medical information accuracy.



超市收银



仓储管理



医药管理



公共服务行业



生产制造



快递物流

## RW185 Specification

<b>1 Module specification</b>		
1.1	Sensor resolution:	1280 x 960 pixels, rolling shutter
1.2	Aiming LED:	Green LED
1.3	Illumination:	Warm white LED light
1.4	Precision:	1D: $\geq 3$ mil 2D: $\geq 5$ mil
1.5	Field of View:	44.5°(H)X33.5°(V)
1.6	Motion Toleration:	Pitch $\pm 60^\circ$ , Skew $\pm 60^\circ$ , Roll 360°
1.7	Focal Distance:	Far from engine: 6 inch/15.24 cm
1.8	Decode ability:	2D PDF417、MicroPDF417、Code 128 Emulation、QR Code、MicroQR、Data Matrix、Maxicode、Aztec 1D Code128 (UCC/EAN-128、GS1-128、ISBT 128)、UPC/EAN(UPC-A、UPC-E、EAN-8/JAN-8、EAN-13/JAN-13、ISBN、ISSB EAN)、Code39、Code32、Code93、Code11、Interleaved 2 of 5 (ITF)、Discrete 2 of 5 (DTF)、Codabar (NW-7) MSI、Chinese 2 of 5、Matrix 2 of 5、Korean 3 of 5、Inverse 1D、Postal Codes、GS1 DataBar、Composite
1.9	Scan performance: (Scanning Depth of Field)	5 mil Code 39 2.4 in/6.1 cm to 9.5 in/24.1 cm 5 mil Code 128 2.8 in/7.1 cm to 9.0 in/22.9 cm 6.67 mil PDF 417 2.4 in/6.1 cm to 8.0 in/20.3 cm 10 mil DataMatrix 2.9 in/7.4 cm to 8.5 in/21.6 cm 100% UPCA 1.8 in/4.6 cm to 19.5 in/49.5 cm 15 mil QR 1.2 in/3.0 cm to 11.5 in/29.2 cm 20 mil QR 1.2 in/3.0 cm to 14.0 in/35.6 cm
<b>2 Wireless specification</b>		
2.1	Transmission method:	Wired、Bluetooth (support protocols 2.0、3.0、4.0、4.2)
2.2	2.4G transmission distance:	65m view distance
	Bluetooth transmission distance:	20m view distance
2.3	Battery:	550mAh
2.4	Charging time:	About 3hours
2.5	Standby time:	3 minutes
2.6	Charger input:	5V 1~2A
<b>3 Electrical Characteristics</b>		
3.1	Operating Voltage:	5V $\pm 5\%$
3.2	Standby Current:	0.6 $\mu$ A
3.3	Operating Current:	350mA $\pm 5\%$
<b>4 Operation Characteristics</b>		
4.1	Support interface:	Standard USB interface
4.2	Reminder method:	Buzzer, vibration,screen
4.3	Scan method:	Button scan*, continuous scan, auto-sensing scan, command-triggered (etc.)

5 Physical Specification		
5.1	Dimension Length*width*height (mm) :	Scanner: 66*41*44
5.2	Screen:	0.96 inches (OLED)
5.3	Weight:	Scanner: ≈ 50g
5.4	Cable:	Type-C Cable Length: 1.2m
5.5	Color	Black, Orange
5.5	Shell material	Hard plastic: ABS

6 Safety regulations		
6.1	Fallen:	Withstands drops from 2 meters onto concrete surfaces
6.5	Certification:	CE ROHS FCC etc

\*Test Conditions: Ambient temperature = 25 °C; Ambient illuminance = 150 lux (incandescent lamp); Using our company's specified

## Product Picture:

